



Rubber Wall Base Carpet Base

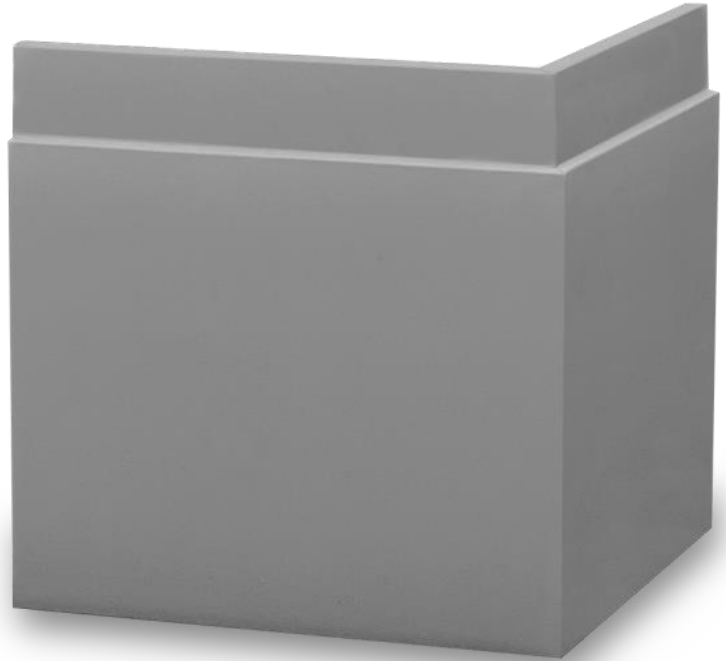
Well-Appointed

Thermoplastic Rubber Wall Base

- *Coveworks resilient rubber wall base profiles blend the look of architectural wood moldings with the durability of thermoplastic rubber and is designed for use in both commercial and residential applications.*
- *Designed and manufactured to meet or exceed all requirements of ASTM F-1861 Standard Specification for Resilient Wall Base.*
- *Meets FloorScore®, NSF 332 Gold and CHPS criteria, and a variety of VOC requirements.*
- *Phthalate free – made with a rapidly renewable bio-based plasticizer.*
- *Free of formaldehyde, 4phenylcyclohexene, DOP & DEHP*
- *Matching ¼ round, inside and outside corner blocks and a wide variety of accessories available.*
- **MADE IN USA**

WA450 Well Appointed

3/8" (9.5mm) thick by 4.5" (11.43cm) ht.
8ft lengths, 5 pcs/carton (40lf) -or-
1 30ft roll/box



Technical Data

LEED® v2009 IEQ Credit 4.1: Qualifies

ASTM F1861-Resilient Wall Base: Type TP, Group 2, Style D, meets or exceeds all performance and dimensional requirements

ASTM E648 (NFPA 253) - Critical Radiant Flux: Class I, > 0.45 W/cm2

ASTM E662 (NFPA 258) - Smoke Density: Passes

ASTM E 84 (NFPA 255) - Class A

Acclimation Time: 48 Hours

Storage & Acclimation Temperature: 65° - 85° F

2 Year limited warranty

Installation: Refer to Wall Base Installation Instructions for complete installation details

Maintenance: Refer to Wall Base Installation Instructions for complete maintenance details.

MADE IN USA

attach color
chip for
submittal