



Rubber Wall Base Carpet Base

Elevated

Thermoplastic Rubber Wall Base

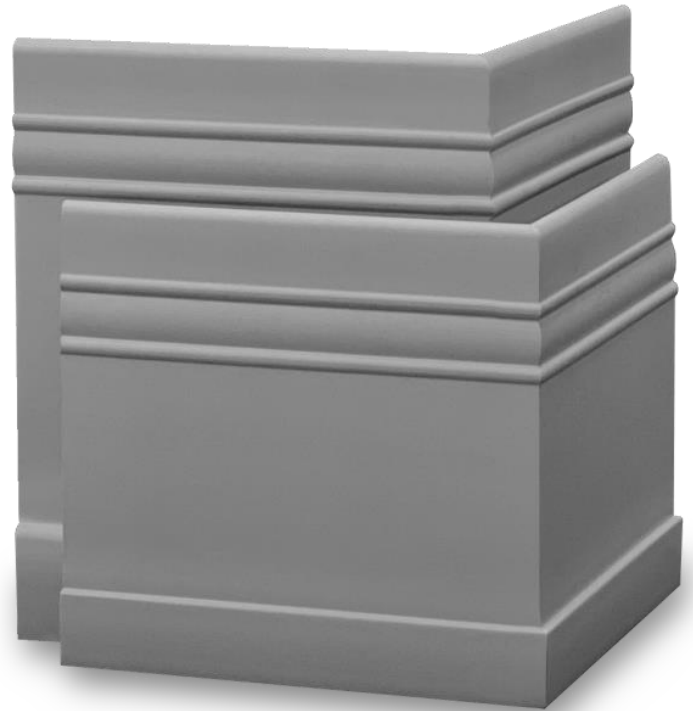
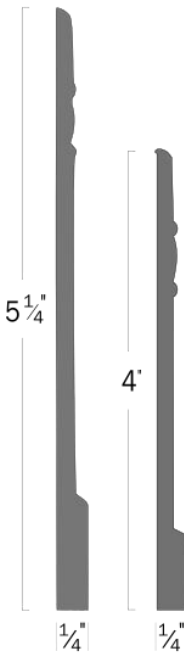
- Coveworks resilient rubber wall base profiles blend the look of architectural wood moldings with the durability of thermoplastic rubber and is designed for use in both commercial and residential applications.
- Designed and manufactured to meet or exceed all requirements of ASTM F-1861 Standard Specification for Resilient Wall Base.
- Meets FloorScore®, NSF 332 Gold and CHPS criteria, and a variety of VOC requirements.
- Phthalate free – made with a rapidly renewable bio-based plasticizer.
- Free of formaldehyde, 4phenylcyclohexene, DOP & DEHP
- Matching ¼ round, inside and outside corner blocks and a wide variety of accessories available.
- MADE IN USA

EL400 Elevated 4"

1/4" (6.35mm) thick by 4" (10.16cm) height, 8ft lengths, 16 pcs/carton (128lf)

EL525 Elevated 5 1/4"

1/4" (6.35mm) thick by 5.25" (13.34cm) height, 8ft lengths, 10 pcs/carton (80lf)



8' lengths



Technical Data

LEED® v2009 IEQ Credit 4.1: Qualifies

ASTM F1861-Resilient Wall Base: Type TP, Group 2, Style D, meets or exceeds all performance and dimensional requirements

ASTM E648 (NFPA 253) - Critical Radiant Flux: Class I, > 0.45 W/cm2

ASTM E662 (NFPA 258) - Smoke Density: Passes

ASTM E 84 (NFPA 255) - Class A

Acclimation Time: 48 Hours

Storage & Acclimation Temperature: 65° - 85° F

2 Year limited warranty

Installation: Refer to Wall Base Installation Instructions for complete installation details

Maintenance: Refer to Wall Base Installation Instructions for complete maintenance details.

MADE IN USA

attach color
chip for
submittal